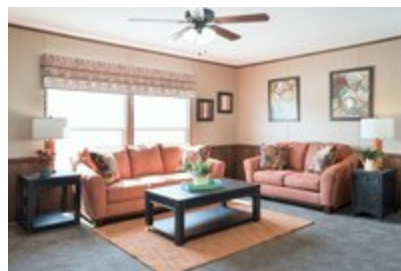


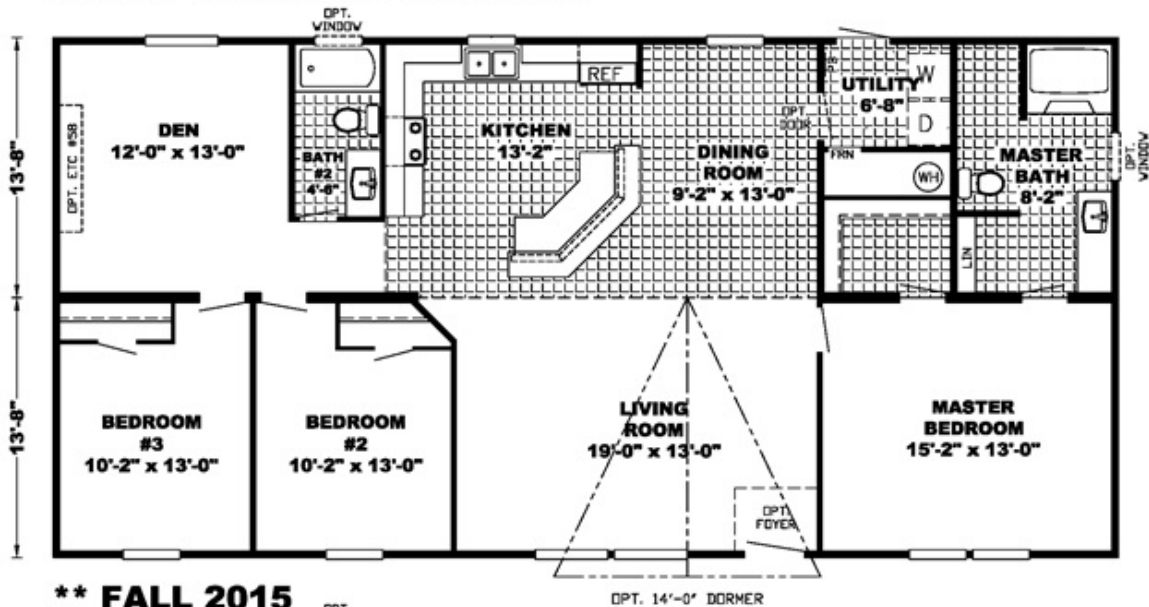


# THE MORRIS

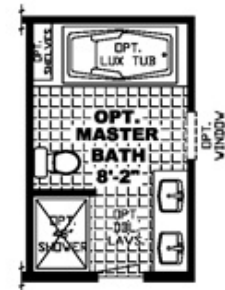
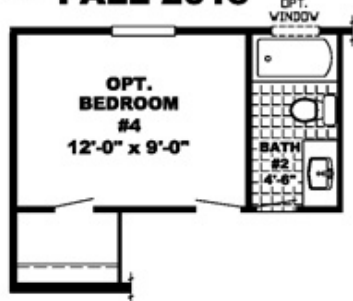


**THE MORRIS** Floor plan number: RUS072070ALAB  
**3 beds • 2 baths • 1568 sq.ft. • 28' width • 56' depth**

## MODEL SIG28563B-56-4/28X56



**\*\* FALL 2015**



Our home building facilities invest in continuous product and process improvements. Plans, dimensions, features, materials, specifications and availability are subject to change without notice or obligation. Renderings and floor plans are representative likenesses of our homes and may differ from the actual homes. We invite you to tour a Home Center near you and inspect the highest value in quality housing available or call (205) 663-3730 to speak with a Home Consultant. Copyright 2017, CMH. All rights reserved.

## CLAYTON HOMES-PELHAM

3446 HIGHWAY 31 SOUTH  
PELHAM, AL 35124

Monday - Thursday: 9am - 6pm  
Friday: 9am - 5pm  
Saturday: 9am - 5pm  
Sunday: Closed

(205) 663-3730